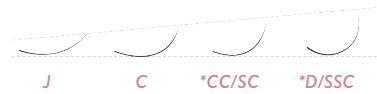


LASH EXTENSIONS

Lash extension is the new beauty must-have for modern women. Imagine waking up to longer & fuller lash without having to put on any mascara/fake eyelashes.

Lash extensions are applied one by one meticulously to your original lash starting 1mm away from the root. Since the eye area is a very sensitive part, lash extensions should only be done by trained beautician using medical-grade/high-quality products.

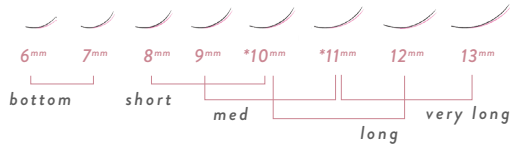
CURL



THICKNESS



LENGTH



PRODUCTS



All lash products are imported from Tokyo & Osaka, Japan. Japan style lash has a thinner root which creates a more natural and elegant effect.

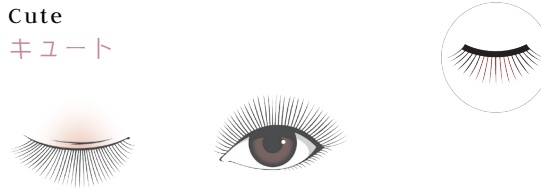


All our Japan lash products have also obtained MATSUREN (Lash safety association of Japan) which ensures the safest material used, such as: all glues do not contain formaldehyde.

STYLE	BRAND	THICKNESS	LIGHTNESS	LASH TYPE	ANTI BACTERIAL
JAPAN	Airy	0.06mm, 0.15mm, 0.18mm, 0.2mm	Very light	Faux sable	No
JAPAN	NEW! Clean Lash	0.06mm, 0.15mm, 0.18mm, 0.2mm	Very light	Faux silk sable	Yes

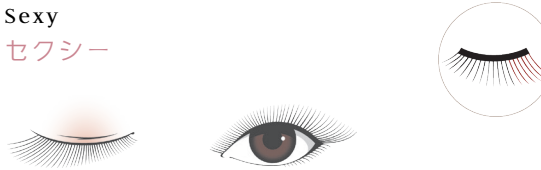
LASH DESIGN

Cute キュート



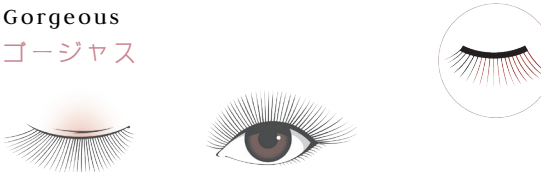
- This design makes the shape of the eyes rounder/bigger.
- The lashes will be longest in the center of the eyes.
- Best for any shape of eyes.

Sexy セクシー



- This design makes the eyes look longer.
- The lashes will be longest near the end of the eyes
- Creates a lash-wing effect.
- Best for almond shape eyes.

Gorgeous ゴージャス



- This design will make the eyes look full and enhanced.
- The lashes will be long and volume all around the center and the end of the eyes.
- Best for a more dramatic look.

Natural Volume ナチュラル ポリウム



- This design makes the eyes look natural yet volume.
- The length of the lashes will mimic/follow the length pattern of original lash.
- Best for any shape of eyes.



LASH

LASH

Single Lash Full set	700
Single Lash Refill*	450
Soft Volume Lash Full Set	800
Rich Volume Lash Full Set	900
Refill Soft Volume*	600
Refill Rich Volume*	650

*refill (within 1 month period, above 1 month will be charged full set)

Bottom lash	250
Color lash	+100

NEW!

GLT (Gentle Lift Tint)	800
GLL (Gentle Lift Lash)	
- Single	1.200
- Soft Volume	1.300
- Rich Volume	1.400

Upwardlash*	+250
Clean Lash*	+50
Lash Deep Cleansing	80

REMOVAL

Removal from Dandelion	free
Removal from other salon	100

prices in IDR.000

COLOR LASH



SINGLE LASH

Only one lash extensions is glued on one original lash, creating a natural look.

VOLUME LASH

Several lash extensions are glued on one original lash, creating more volume look.

FAQ

1. Is it painful / itchy? Does it sting?

Not at all, in fact you will not feel anything and will most likely fall asleep during process.

2. Process duration?

1.5 – 2 hours working time.

3. Will it make my original lash fall faster / damage my original lash?

No, lash extensions will fall down following your original lash growth cycle. Lash extensions will not reduce your lashes or make them go bald. Correct lashing technique will only glued the extension(s) to ONE original lash (1mm away from the root, never on the skin!) therefore will not interrupt the growth and condition of the original lash.

**Note: lash perm is proven to be more damaging, since it forcefully bends the original lash using strong chemical.*

4. How long will it last?

4-5 weeks (depending on your maintenance, skin type, and weather).

5. Are our products safe?

We only use MEDICAL-GRADE adhesives that are LOW FUME, FORMALDEHYDE-FREE and LONG LASTING (made in Japan). We also only use premium SYNTHETIC LASH that are free of animal-cruelty. According to lash experts and associations across the world, lashes that are derived from live animals/human should be avoided due to unhygienic reason.

WHY DANDELION?

- We only use imported synthetic sable lash which are ultra-light weight & hygienic (anti-bacterial)
- Our extensions is so comfortable, you will feel literally nothing on your eyes after the extensions
- Comprehensive selection of curls and thickness that no other lash salon has
- Premium lash products that you won't find locally, all are imported from USA and Japan
- Our lash stylists are professionally trained following international standard and guidelines
- Certified internationally (by Novalash) since 2014 & Japan lash Association (JLA) since 2016 & 2017, Nippon Eyelash Extensions Association (NEEA) since 2017.



dandelion[®]
waxing · nails · lash

Jl. Metro Pondok Indah SG-21, Jakarta Selatan _____ +62 8121 622 622

⌚ Mon - Sat (9 a.m - 7 p.m)

⌚ Sun (9 a.m - 6 p.m)

Jl. Senopati No. 41 C, Jakarta Selatan _____ +62 811 900 9919

⌚ Mon - Fri (7 a.m - 9 p.m)

⌚ Sat - Sun (9 a.m - 7 p.m)

Jl. Bumi No. 24, Kby. Baru, Jakarta Selatan _____ +62 811 900 1131

⌚ Mon - Sat (9 a.m - 7 p.m)

⌚ Sun (9 a.m - 6 p.m)

Taman Gapura E2 No. 7, Citraland, Surabaya Barat _____ +62 811 5909 23

⌚ Mon - Sat (10 a.m - 8 p.m)

⌚ Sun (10 a.m - 6 p.m)

Jl. Dharmahusada Indah Timur RR-19, Surabaya Timur _____ +62 811 5199 009

⌚ Mon - Sat (10 a.m - 8 p.m)

⌚ Sun (10 a.m - 6 p.m)

📷 @dandelion.id

✉ info@dandelion-id.com

www.dandelion-id.com

Last Updated: February 2019

LASH

CATALOGUE